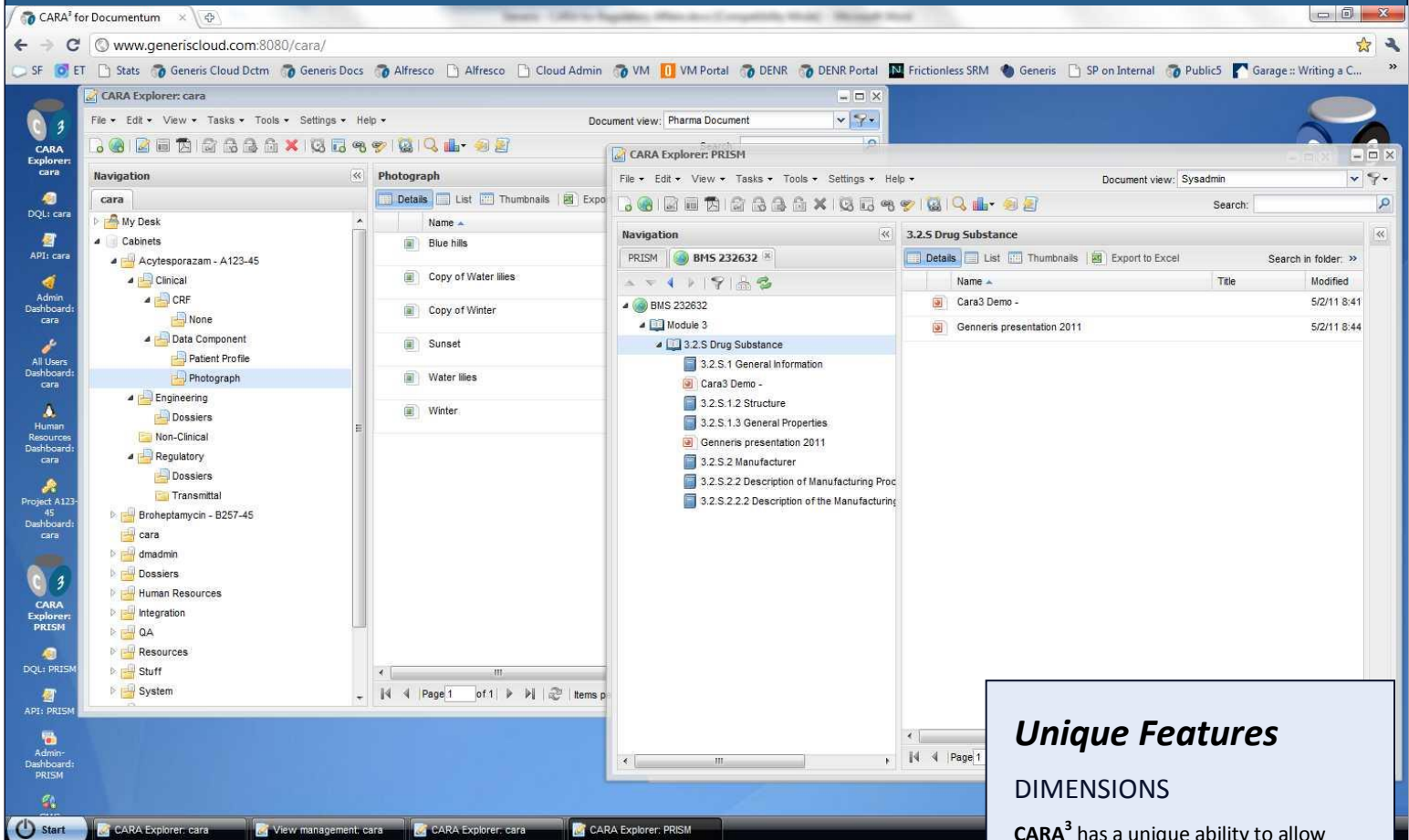


# Low cost configured solution for Local, Regional and National Government

## Documentum • Alfresco • Oracle WebCenter



## A next generation UI for managing Government documents – including a public access portal

**CARA<sup>3</sup>** © PATENT PENDING is a brand new and unique concept building on the CARA tradition – an ergonomically designed, fast web application for Documentum. It is designed to facilitate the creation, review, approval and management of documents. It leverages core repository functionality (using the new CMIS functions where available) while also providing performance enhancements and ergonomic improvements. In addition, **CARA<sup>3</sup>** provides new functionality to better manage controlled documents or complex documents such as reports or submissions through **CARA<sup>3</sup> Structures** and through reporting tools like the *Task Manager* and *Status Manager*. **CARA<sup>3</sup>** is underpinned by the Generis DocConfigurator product which allows rapid setup and configuration of the database to requirements. *Free up your end users from the constraints of existing interfaces and allow them to focus on content.*

### Unique Features

#### DIMENSIONS

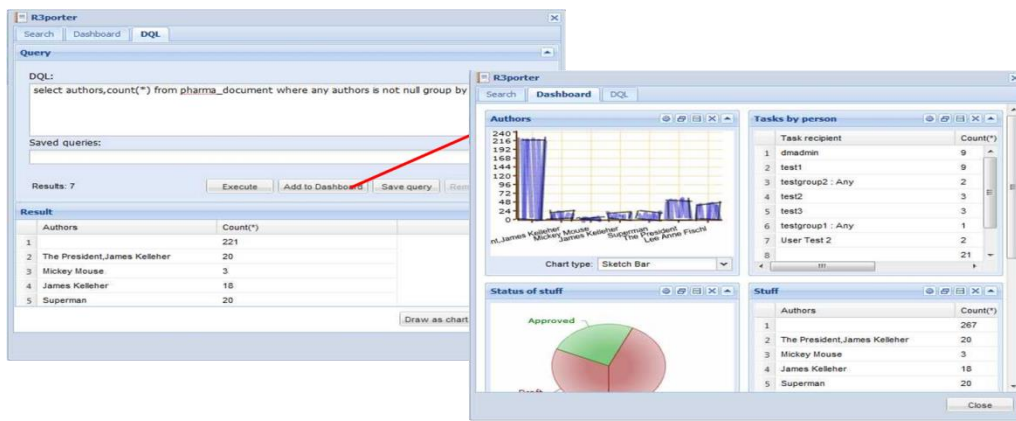
**CARA<sup>3</sup>** has a unique ability to allow users to build their own tree view (“Dimensions”). Choose any properties (one per level for up to 5 levels) and browse the resulting tree view. The browser window also allows users to open more than one “Repository Explorer” window within the main window, using a desktop-like Start Menu and window management.

#### WIDGETS

Extensible panel showing widgets – choose from core set (e.g. properties, renditions) or create your own, linking in any web service as a widget e.g. database view, portlets. Rearrange the widgets pane with drag & drop.

#### VIEW MANAGEMENT

Define different views for different user groups / usage scenarios. Specify different properties, widgets, filters, and other options, allowing users to work in the way that best supports their processes.



## CARA<sup>3</sup> RapidDeploy – Government documents

CARA **RapidDeploy** for Government documents is a configuration package of the standard CARA product to provide functionality required for managing all kinds of Government documentation. This package has been deployed for internal and public use at several Government authorities, and has evolved to cover almost all the standard document creation, review, approval, signature and publishing functionality required, as well as very highly evolved per-document security.

Available with this package is also the CARA Portal with dedicated search and viewing capabilities to provide the functionality required for document consumers such as the General Public.

Additionally, CARA comes with the option of ViewONE Pro from Daeja fully integrated to provide viewing and annotation of more than 300+ document formats within the browser window, without needing the source application on the user's PC.

The package contains the following functionality, which can be configured to tailor it to your requirements for rapid deployment:

- **Publish** documents to the public based on any attribute value
- Automatically make documents **Effective** and publish on the CARA Portal based on rules
- Filtering **workflows** based on status, properties, groups
- **Change control/request** mechanism
- **Document security - Watermarking** with different overlays depending on status or any other attributes - including different overlays for **viewing, printing, exporting** and **controlled printing**. Also full document encryption and prevention of printing
- **Seamless viewing** of 300+ formats inside the browser – control access without the application having to be on the user's PC
- Capturing **eSignature** on user actions and adding eSignature pages
- **Controlled printing** including print numbers, reason for printing, print addressee
- **Ease of importing** existing documents, whether electronic or scanned, including batch importing
- Pre-populate metadata based on rules or document content
- Works on any browser allowing general public access without a hitch
- **Pre-configured settings** for rapid building of your business rules such as folder paths, data dictionaries and much more

## REPORTER

The CARA<sup>3</sup> Reporter is the next generation of search and reporting. The search itself consists of a user search definition, but based on type OR classification, and including the standard operators and attribute / full text searching. The differences become apparent when you launch the search – it is **fully asynchronous** allowing you to continue working on other things while the search runs. Administrators can run DQL searches.

## DASHBOARD

The Dashboard is a dynamic place to assemble query results. Add any query to the dashboard, and results can be shown as tables, charts or graphs, exported to Excel or embedded as widgets in the main view.

## USER PREFERENCES

All settings that users choose (column displays and widths, dimensions tree-view, filters, cabinet restrictions and so on) are saved so that the user can login from another machine and will have the same preference choices applied.

## CONFIGURABILITY

The Generis DocConfigurator product is fully leveraged behind the scenes to ensure that the cara3 interface is as configurable as possible. The configurations are not restricted to object type, as is the case on many configuration products, but based either on categories (any query set) or Aspects (where supported by the repository in question). There are over 30 areas of functionality that can be configured –refer to our information on DocConfigurator for details.

## Contact us

Please contact us to arrange a demo or request additional information. We also provide free, fully functional evaluation downloads so that you can work with our products and ensure they meet your requirements.

info@generiscorp.com • www.generiscorp.com  
+1-877-244-2022 **PATENT PENDING**

