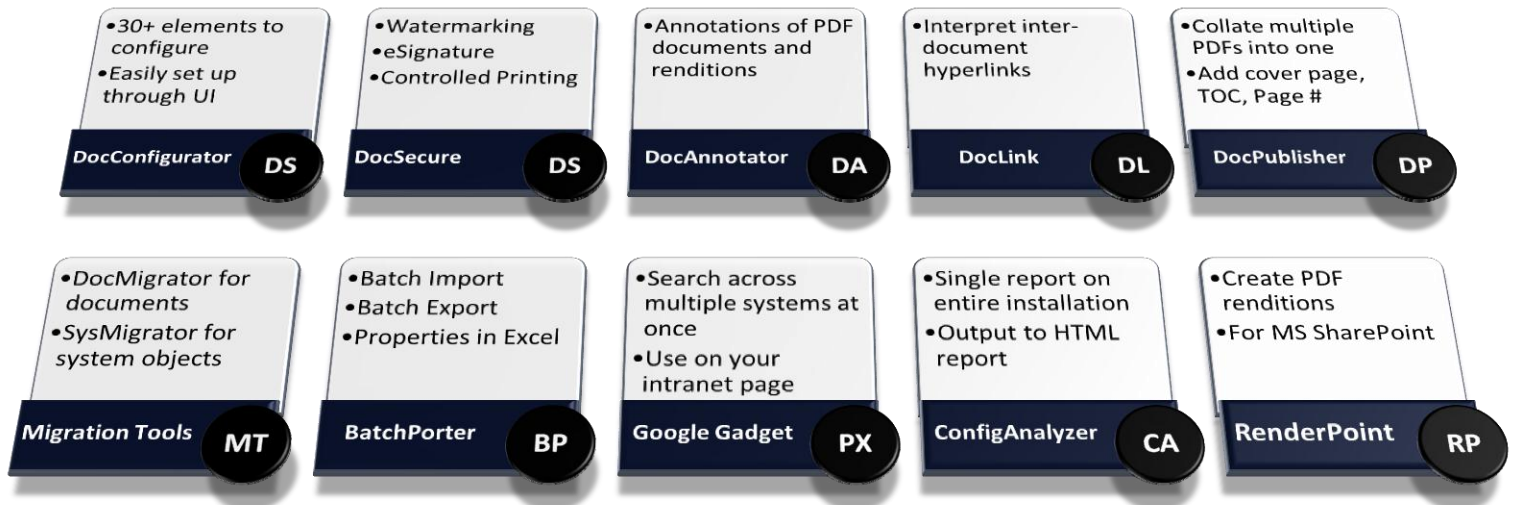


configurable supporting modules for  
**Documentum • SharePoint • Alfresco**



## DocConfigurator

DocConfigurator<sup>®</sup> is the configuration layer at the heart of the Generis solution suite. This allows configuration of behavior for documents based on a combination of "horizontal" classification (up to 8 levels of hierarchy) and "vertical" category (any query statement), by which behavior can be managed down to an individual document. The areas of configurability include:

- Properties: building different screens for the different users / groups for the same document, including dynamic screens not requiring re-installation, property value inheritance, automatic numbering / naming, data dictionaries with alias values, taxonomies, dependencies and many other features
- Lifecycle and object type definition per classification (not just per object type) including global multi-document status view with Status Manager
- Audit trail rules, eSignature, and viewing of audit trail
- Dynamic template security model per category of documents - build one template with rules and exceptions and the system automatically builds necessary individual ACLs
- Additional dynamic security per active task
- Task configuration, including full range of notifications, and global multi-document workflow view with Task Manager
- New document wizard including filtered templates
- Checkin/out rules
- Trash Can
- Automatic folder placement
- Content handling – disallow import checkin without certain templates, or with PDF security
- MS Word Extraction – extract text or properties from documents during import to populate repository properties
- Multi-lingual email notifications and interface support including language aliases for data values

And many more...

## Data migration and search

### BATCHPORTER

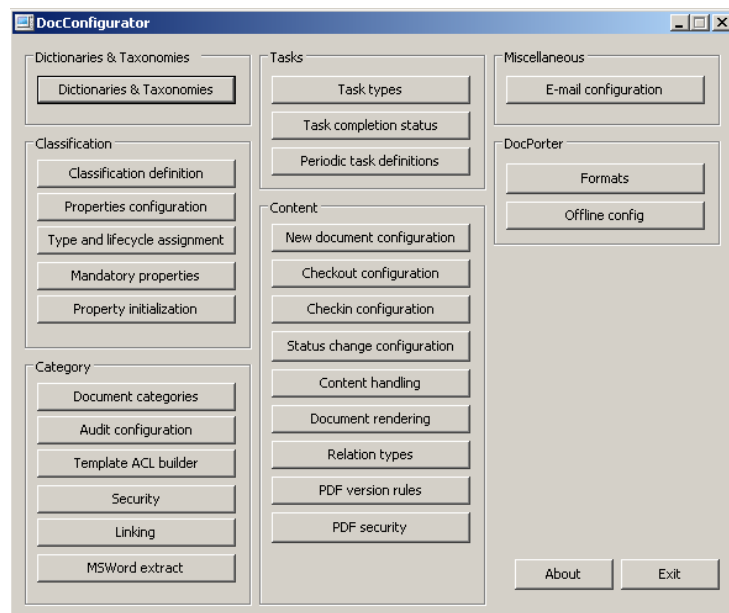
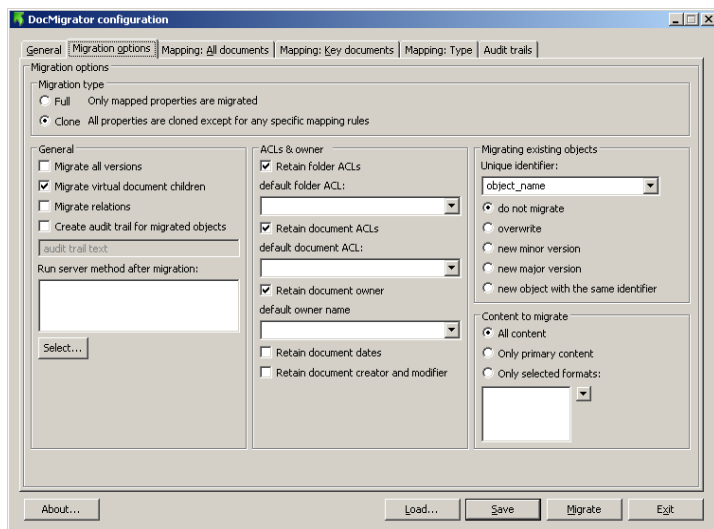
BatchPorter<sup>®</sup> allows users to perform batch imports and exports, managing metadata in Excel spreadsheets, with validation during import, population of Excel sheets with drop-down values from repository data dictionaries, importing as folder structure or virtual document, and more.

### MIGRATION TOOLS

Migration Tools<sup>®</sup> is a utility to migrate documents to / from Documentum, SharePoint, Alfresco and the file system. It is fully configurable and provides property mapping, cleanup, replacement and default values, validation queries and reports.

### GOOGLE GADGET

Search across multiple systems (all CMIS systems supported) in a single search. From the results, view documents with one click.



## PDF utilities

### DOCSECURE

DocSecure<sup>®</sup> provides configurable PDF manipulations including dynamic watermarking (including header/footer functionality or overlays), capturing and manifesting eSignature (including hash values), controlled printing, and adding pages (e.g. cover, history, signature or any other based on DQL queries). The manipulation is based on rules which can be defined on any property / combination of property values. Overlays and pages can contain text, properties, query results or dynamically calculated information including JavaScript form fields. DocSecure is built using the latest PDF processing technology resulting in a very high level of flexibility together with fast performance.

### DOCPUBLISHER

DocPublisher<sup>®</sup> is a report-level publishing utility, providing collation of multiple PDF files into a single file. To this file, you can then add pages such as cover page(s), Table of Contents, and apply (using DocSecure) elements like page numbering throughout, unified headers and footers and other functions.

### DOCLINK

DocLink<sup>®</sup> manages cross-document hyperlinks contained in documents stored in the repository. If such links are Filesystem based (folder relative) they are "broken" when opening a document from the repository. DocLink processes these links when viewing from the repository, and updates them to point to the target back in the repository, so that clicking on the link will fetch the target correctly.

### DOCANNOTATOR

DocAnnotator<sup>®</sup> is a plug-in to Adobe Acrobat to allow annotating PDF documents from the repository.

### RENDERPOINT

RenderPoint<sup>®</sup> is specifically for SharePoint, and provides the mechanism for creating PDF renditions of content that is imported into or checked in to SharePoint libraries. RenderPoint works by maintaining a shadow library in parallel to the main library. Editing is done on the original content, and PDF renditions are saved and viewed from the shadow library.

### CONFIGANALYZER

The Generis ConfigAnalyzer<sup>®</sup> is a utility designed to report on your Documentum or SharePoint environment in one easy report. It will examine:

- General OS information
- General Java information
- General .NET information
- Class path information
- BOF/TBO information
- Object type information
- Environment variables
- Installation information
- Module integrity
- dbor.properties contents
- DFC integrity
- Docbase/library configuration
- Security information
- Users information
- Groups information
- Jobs information
- Server, client and connection configuration
- Any other user-defined query

## Contact us

Please contact us to arrange a demo or request additional information. We also provide free, fully functional evaluation downloads so that you can work with our products and ensure they meet your requirements.

PO Box 816 • Mount Laurel • NJ 08054 • USA  
 info@generiscorp.com • www.generiscorp.com  
 +1-856-439-9800

**PATENT PENDING**



HQ: