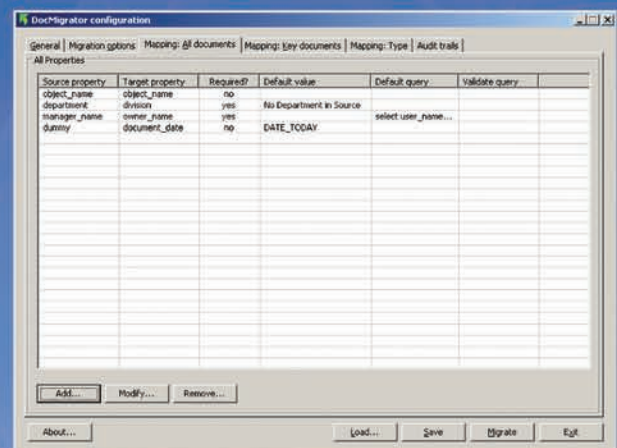


Migration Tools | Configurable system and content migration for CARA

DocMigrator provides functionality to migrate data between repositories on the same platform or across platforms. Functionality includes:

- Rules-based mapping of metadata: replacement, concatenation, substrings, query-based updates, adding and dropping values.
- Handling of versions, renditions and virtual documents.
- Migration of related objects, including remapping of object IDs.



SysMigrator allows migration of all system objects required to support migrating content from one environment to another, including:

- Users, groups, roles
- ACLs
- Types, procedures
- Jobs and methods
- Registered tables
- Any custom system objects

